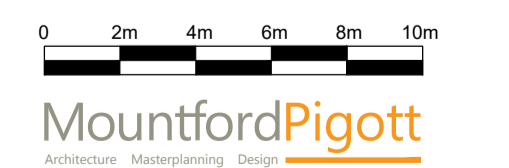
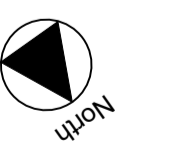
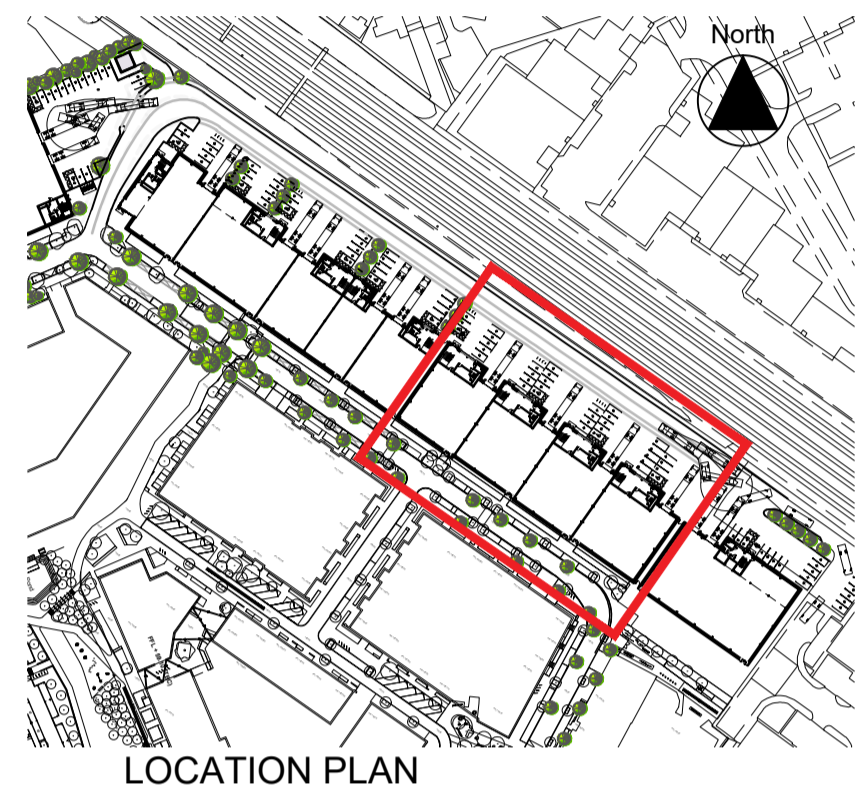


© Mountford Pigott LLP 2019
 Reproduction in whole or in part by any means is prohibited without the prior permission of Mountford Pigott LLP.
 This drawing is only to the stated scale if it is printed correctly. MPELLP cannot accept responsibility for the incorrect scaling of drawings printed by third parties.
 All dimensions are in mm unless otherwise stated.
 If this drawing forms part of an application for planning permission on behalf of the applicant named below, it shall not be used for any other purpose without the express permission of Mountford Pigott LLP.
 This drawing may incorporate information from other professionals. Mountford Pigott LLP cannot accept responsibility for the integrity and accuracy of such information. Any clarification and/or additions that are required appertaining to such information should be sought from the relevant profession or their appointment representative as listed below.
 LIST OF INFORMANTS:
 Ordnance Survey Data, Licence number 100022432 ord. no. 497015
 Pollard Thomas Edwards Architects Masterplan - HVEC1-1-SK-600
 Pollard Thomas Edwards Architects Masterplan - 091_SK_003-V-Redline Plots C2 & D3
 Outerspace Landscape Design - 580 X LAND

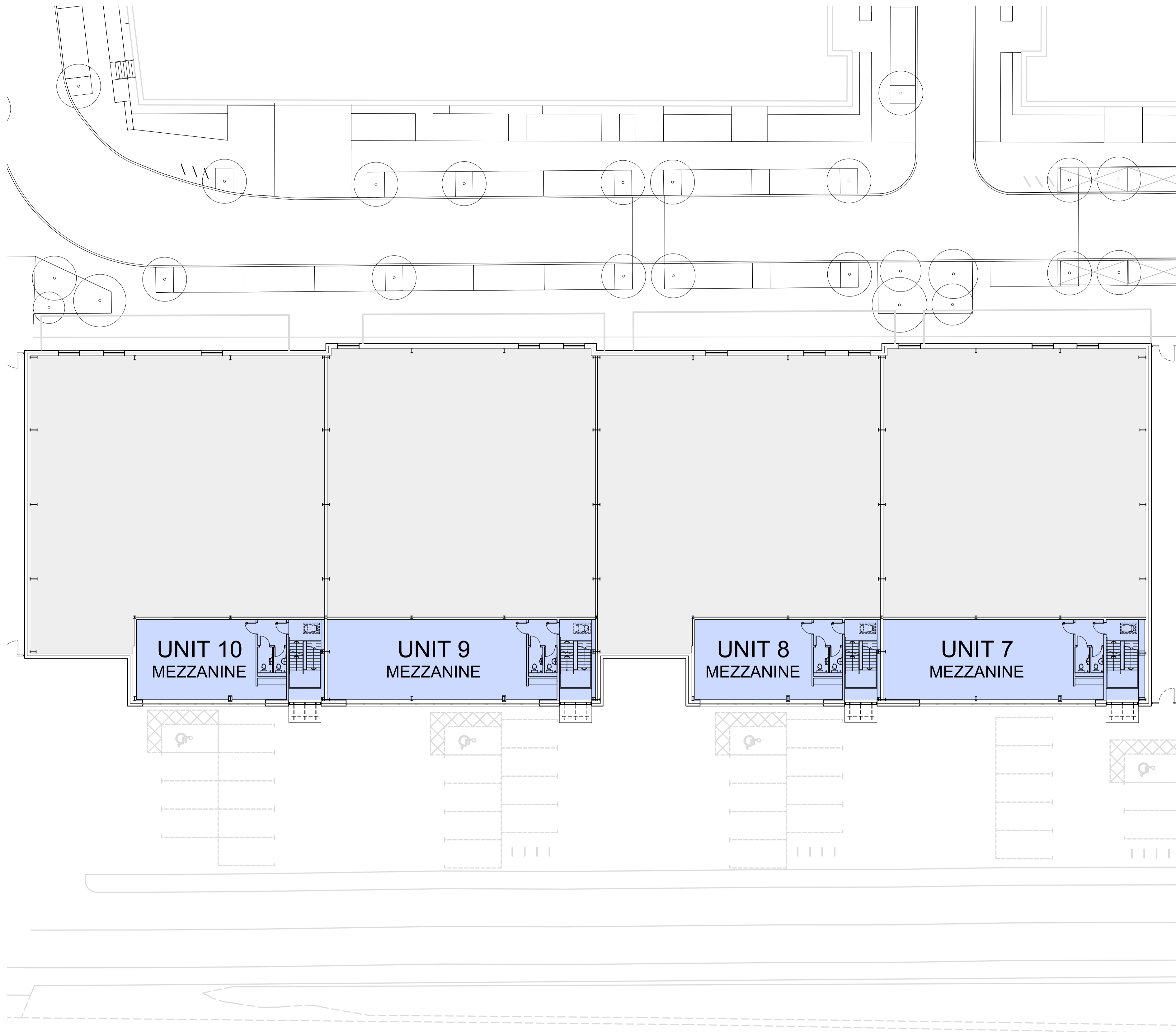
REVISIONS	DATE	DRN	REV
FIRST ISSUE	16.02.22	JG	-



MountfordPigott
 Architecture Masterplanning Design
INDUSTRIAL UNITS 7 - 10
GROUND PLAN
 2181-SK40

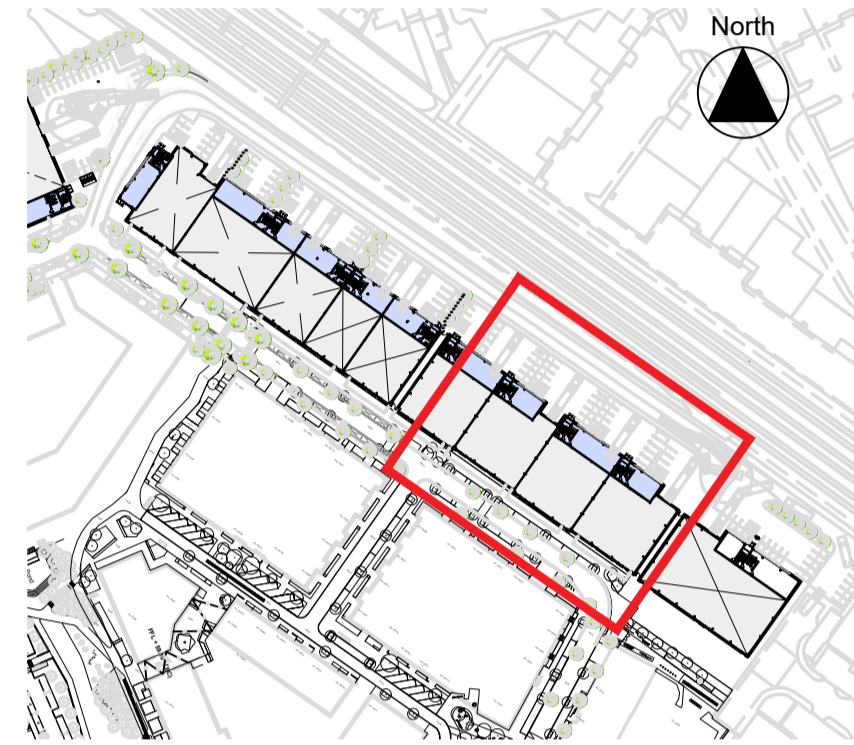
1:200 @ A1
 DRAWN BY JG
 16.02.22

BYSS HARROW



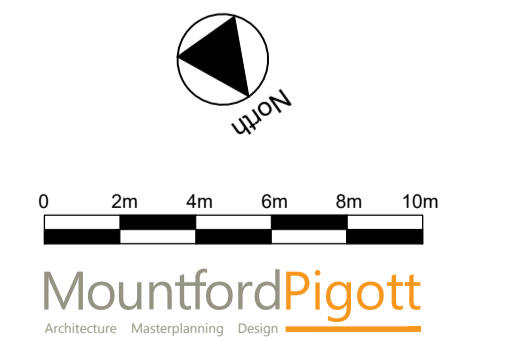
© Mountford Pigott LLP 2019
 Reproduction in whole or in part by any means is prohibited without the prior permission of Mountford Pigott LLP.
 This drawing is only to the stated scale if it is printed correctly. M PLLP cannot accept responsibility for the incorrect scaling of drawings printed by third parties.
 All dimensions are in mm unless otherwise stated.
 If this drawing forms part of an application for planning permission on behalf of the applicant named below, it shall not be used for any other purpose without the express permission of Mountford Pigott LLP.
 This drawing may incorporate information from other professionals. Mountford Pigott LLP cannot accept responsibility for the integrity and accuracy of such information. Any clarification and/or additions that are required appertaining to such information should be sought from the relevant profession or their appointment representative as listed below.
 LIST OF INFORMANTS:
 Ordnance Survey Data, Licence number 100022432 ord. no. 497015
 Pollard Thomas Edwards Architects Masterplan - HVEC1-1-SK-600
 Pollard Thomas Edwards Architects Masterplan - 091_SK_003-V-Redline Plots C2 & D3
 Outerspace Landscape Design - 580 X LAND

REVISIONS	DATE	DRN	REV
FIRST ISSUE	16.02.22	JG	-



LOCATION PLAN

BYSS HARROW



MountfordPigott
 Architecture Masterplanning Design
INDUSTRIAL UNITS 7 - 10
FIRST FLOOR PLAN
2181-SK41

1:200 @ A1
 DRAWN BY JG 16.02.22